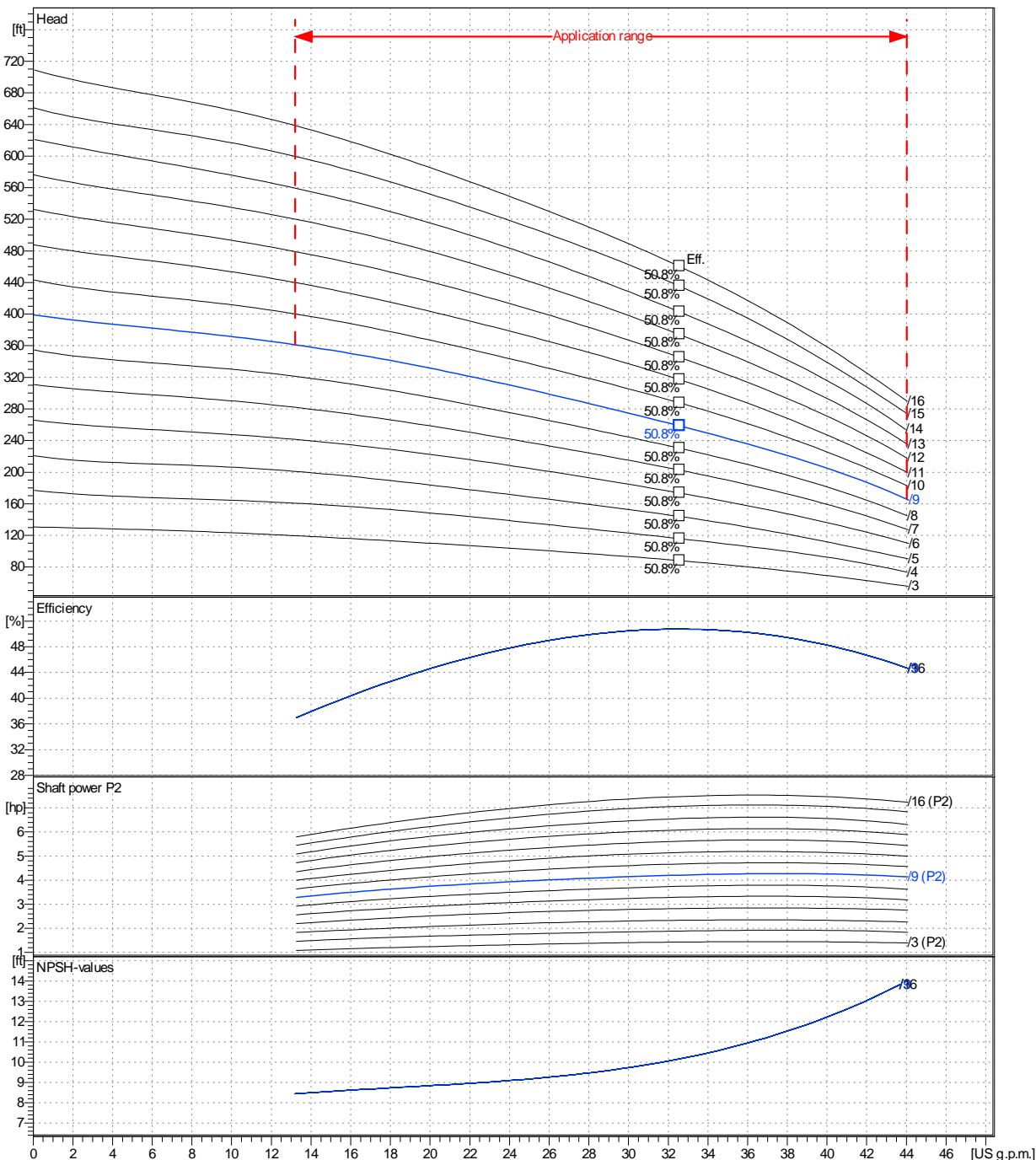


	Receiver	From
Company name		
Respons. Department		
Person in charge		
Phone number		
Fax no		
E-mail address		

Operating area	Flow	Head	Impeller type	Radial impeller
Operating data specification	0 US g.p.m.	0 ft	Impeller construction	Closed
Pump data	US g.p.m.	ft	Sense of rotation	Clockwise from the drive end
			Outlet width	DN32
	Flow	Head	Shaft power P2	Speed
	Min. Max. η Max.	H(Q=0) η Max.	P2(Q=0) Max. η Max.	rpm 3500
	US g.p.m. US g.p.m. US g.p.m.	ft ft	hp hp hp	Frequency Hz 60 Hz
	13.2 44 32.6	399 259	4.27 4.21	

Performance data based to: Water, pure [100%] ; 68°F; 62.3lb/ft³; 1.08E-5ft²/s UNI EN ISO 9906:2012 - Grade 3B



Project	Project ID	Created by	Created on	Last update
			9/9/2022	

