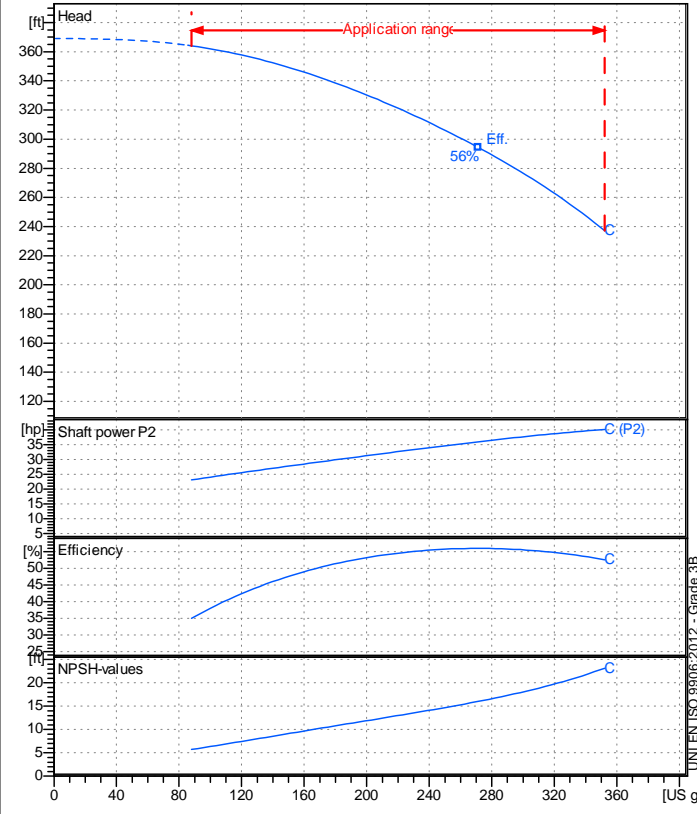


Company name
 Respons. Department
 Person in charge
 Phone number
 Fax no
 E-mail address

Receiver	From



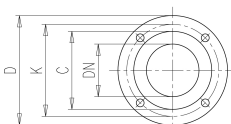
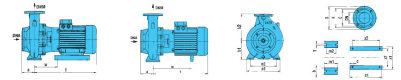
Operating data specification

Nominal flow	US g.p.m. 0
Nominal head	ft 0
Static head	ft 0
NPSH - v value of plant	ft 0
Inlet pressure	psi 1.42
Fluid	Water, pure
Operating temperature t A	°F 68
Density at t A	lb/ft³ 62.32
Kin. viscosity at t A	ft²/s 1.082E-5

Pump		6MGX2 40-250N C	
Pump name	6MGX2 40-250N C		
Size	50/32/200		
Design			
Speed rpm	3600	No of stages	1
Impeller type			
Flow	Nominal	US g.p.m.	
	Max-	US g.p.m.	352
	Min-	US g.p.m.	88.1
Head	Nominal	ft	
	Max-	ft	364
	Min-	ft	237
Head H(Q=0)	ft 369		
NPSH 3%	ft		
Max. working pressure	psi 160		
Shaft power	hp		
Efficiency	%		
Max absorbed power	hp 40.11		

Materials Pump	
Shaft	Duplex Stainless steel (1.4362)
Impeller	Precision cast Stainless steel AISI 316 (1.4408)
Pump body	Cast Stainless steel AISI 316 (1.4408)
Seal disc	Cast Stainless steel AISI 316 (1.4408)
Gasket	Natural fiber
Mechanical seal	Q1Q1VG (SiC/SiC/FPM)

Dimensions in inch	
a	3 ¹⁵ / ₁₆ z1 15 ⁹ / ₁₆
b	2 ⁹ / ₁₆ z2 12 ¹ / ₂
d	18*4
DNA	2 ⁹ / ₁₆
DNM	1 ⁹ / ₁₆
h1	7 ¹ / ₁₆
h2	8 ⁷ / ₈
l	39 ¹⁵ / ₁₆
m1	4 ¹⁵ / ₁₆
m2	3 ³ / ₄
n1	12 ⁵ / ₈
n2	9 ¹³ / ₁₆
s	9 ⁹ / ₁₆
w	17 ¹¹ / ₁₆
x1	14 ³ / ₈
x2	12



C	3 ⁷ / ₁₆	C	4 ¹³ / ₁₆
D	5 ⁷ / ₈	D	7 ⁵ / ₁₆
DN	1 ⁹ / ₁₆	DN	2 ⁹ / ₁₆
K	4 ⁵ / ₁₆	K	5 ¹¹ / ₁₆
n°	3 ⁹ / ₁₆	n°	3 ⁷ / ₁₆
øn	3 ³ / ₄	øn	3 ³ / ₄

Motor		Frame size	200 L	
Manufacturer / Type		SAER	MEC200L-2P-30	
Rated power	hp	40.231	Efficiency 4/4	90.2 %
Electric current	A	50	Speed	rpm 3600
Electric voltage	V	460 V	3~	Hz 60
Starting mode	Unknown			
Degree of protection	IP 55	Insulation class	F	

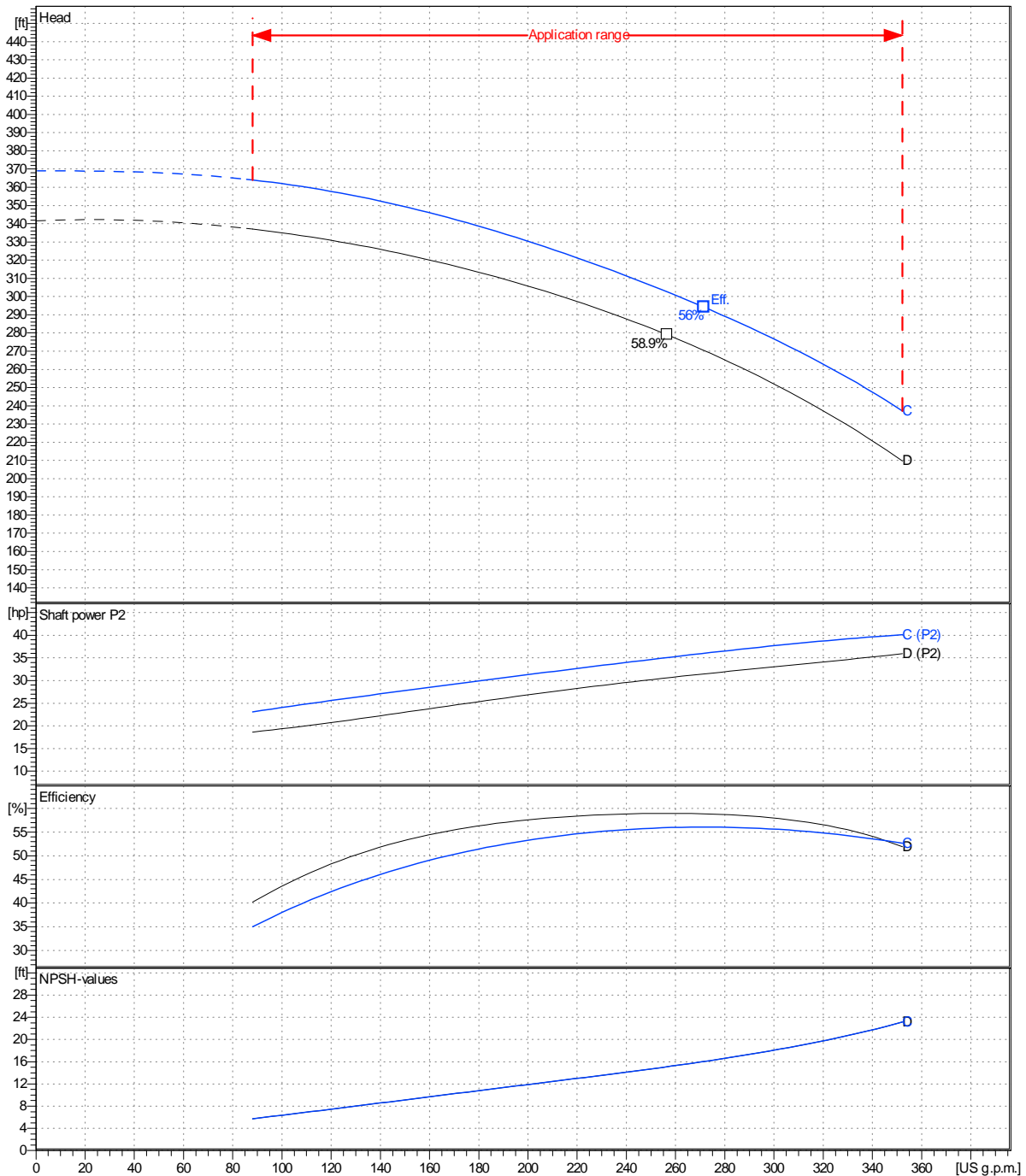
Remarks:					
Project	Project ID	Created by	Created on	Last update	
			2022-09-16		

Receiver	From
Company name	
Respons. Department	
Person in charge	
Phone number	
Fax no	
E-mail address	

Operating area	Flow	Head	Impeller type
Operating data specification	0 US g.p.m.	0 ft	Impeller construction Closed
Pump data	US g.p.m.	ft	Sense of rotation Clockwise from the drive end
			Outlet width DN 40
	Flow	Head	Shaft power P2
	Min. Max. η Max.	H(Q=0) η Max.	P2(Q=0) Max. η Max.
	US g.p.m. US g.p.m. US g.p.m.	ft ft	hp hp hp
	88.1 352 272	369 294	40.1 36
			Speed rpm 3600
			Frequency Hz 60 Hz

Performance data based to: Water, pure [100%]; 68°F; 62.3lb/ft³; 1.08E-5ft²/s

UNI EN ISO 9906:2012 - Grade 3B



Project	Project ID	Created by	Created on 2022-09-16	Last update
---------	------------	------------	---------------------------------	-------------

Company name
Respons. Department
Person in charge
Phone number
Fax no
E-mail address

