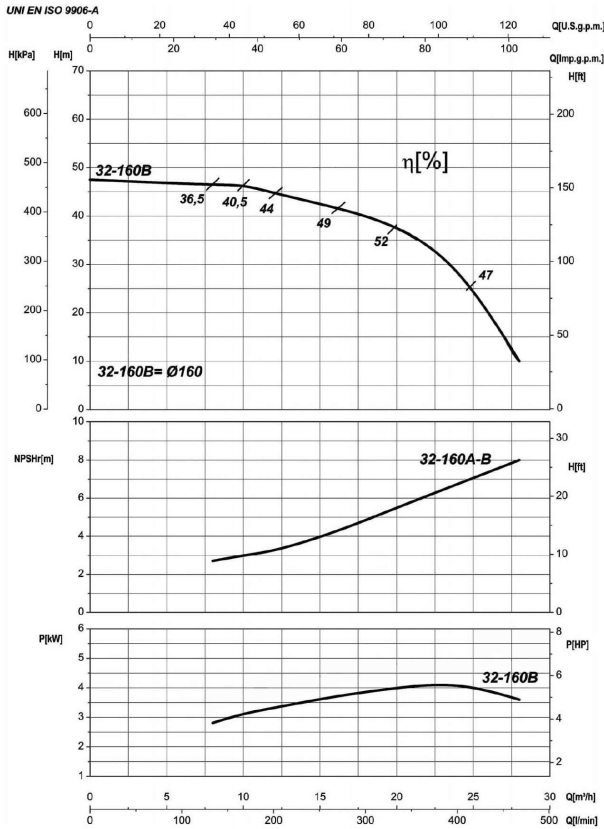


Receiver

From

Company name
Respons. Department
Person in charge
Phone number
Fax no
E-mail address



Operating data specification

Nominal flow	US g.p.m. 0
Nominal head	ft 0
Static head	ft 0
NPSH - v alue of plant	ft 0
Inlet pressure	psi 1.42
Fluid	Water, pure
Operating temperature t A	°F 68
Density at t A	lb/ft³ 62.32
Kin. viscosity at t A	ft²/s 1.082E-5

Pump

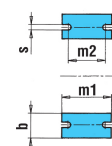
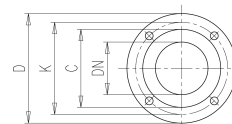
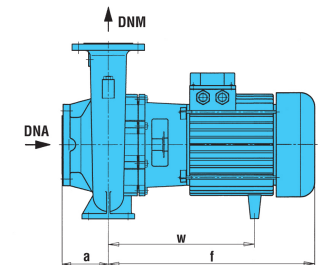
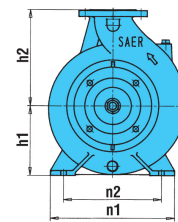
Pump name	6IR32-160B		
Size	50/32/160		
Design			
Speed rpm	3600	No of stages	1
Impeller type			
Flow	Nominal	US g.p.m.	
	Max-	US g.p.m.	123
	Min-	US g.p.m.	35.2
Head	Nominal	ft	
	Max-	ft	153
	Min-	ft	31.6
Head H(Q=0)	ft	156	
NPSH 3%	ft		
Max. working pressure	psi	67.5	
Shaft power	hp		
Efficiency	%		
Max absorbed power	hp	5.3491	

Materials Pump

Shaft	Stainless steel AISI 431 (1.4057)		
Impeller	Cast iron EN-GJL-250		
Pump body	Cast iron EN-GJL-250		
Seal disc	Cast iron EN-GJL-250		
Gasket	Natural fiber		
Mechanical seal	BVEG (Grafito/Ossido Allumina/EPDM)		

Dimensions in inch

- a 3¹/₈
- b 1⁵/₁₆
- DNA 1⁵/₁₆
- DNM 1¹/₄
- f 16⁵/₈
- h1 5³/₁₆
- h2 6⁵/₁₆
- m1 3¹⁵/₁₆
- m2 2³/₄
- n1 9⁷/₁₆
- n2 7¹/₂
- s 9¹/₁₆
- w 12¹/₄



- | | |
|-----------------------------------|-----------------------------------|
| C 3 ¹ / ₁₆ | C 4 |
| D 5 ¹ / ₂ | D 6 ¹ / ₂ |
| DN 1 ¹ / ₄ | DN 1 ⁵ / ₁₆ |
| K 3 ¹⁵ / ₁₆ | K 4 ¹⁵ / ₁₆ |
| n° 3 ¹ / ₁₆ | n° 3 ¹ / ₁₆ |
| Øn 3 ¹ / ₄ | Øn 3 ¹ / ₄ |

Motor	Frame size	112 M		
Manufacturer / Type	SAER	MEC112M-2P-4		
Rated power	hp	5.3641	Efficiency 4/4	85.5 %
Electric current	A	14.7 A	Speed rpm	3600
Electric voltage	V	230V	3~	Hz 60
Starting mode	Unknown			
Degree of protection	IP 55	Insulation class	F	

Remarks:

Project	Project ID	Created by	Created on	Last update
			2022-08-01	

Receiver

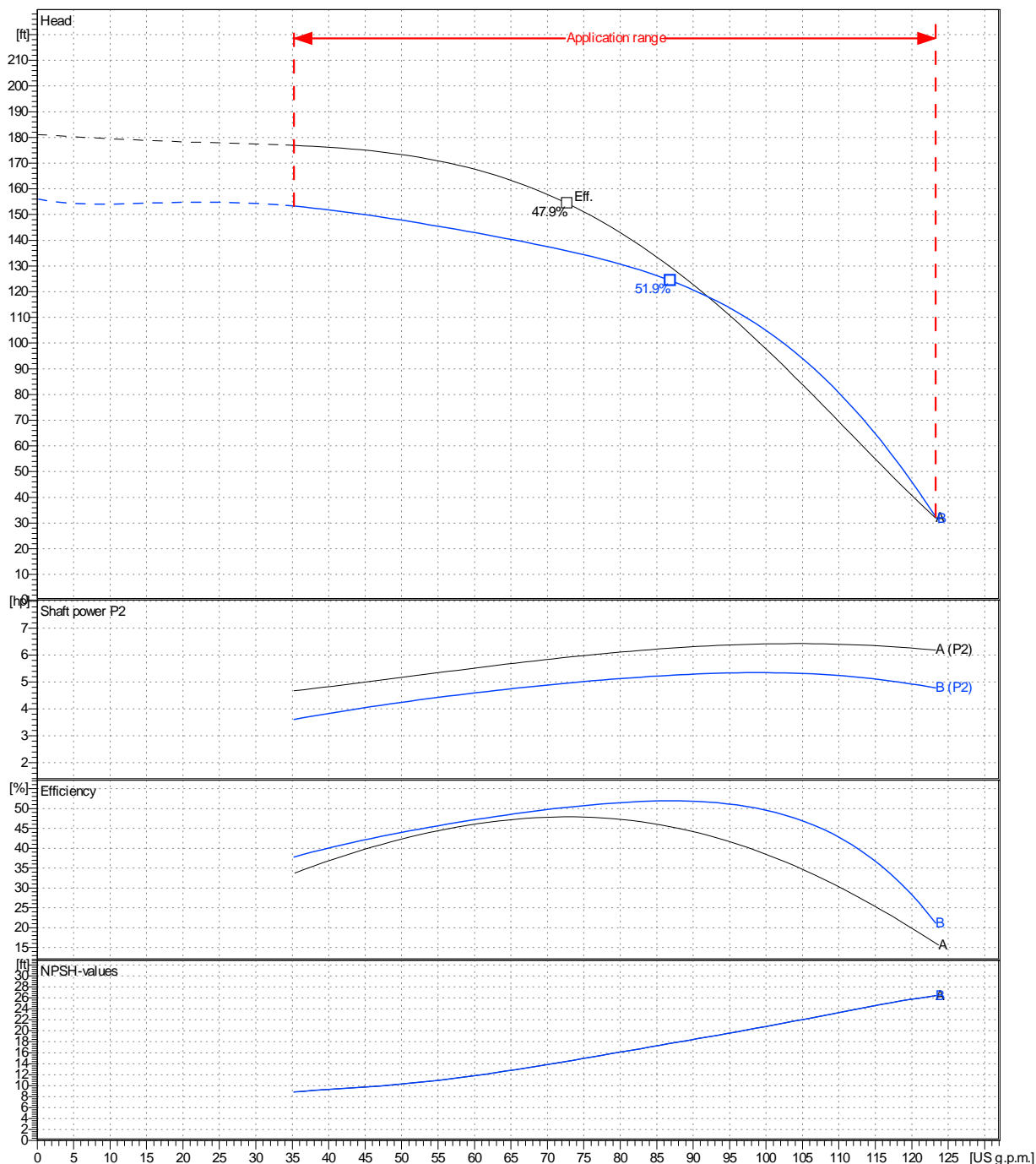
From

 Company name
 Respons. Department
 Person in charge
 Phone number
 Fax no
 E-mail address

Operating area	Flow	Head	Impeller type	
Operating data specification	0 US g.p.m.	0 ft	Impeller construction	Closed
Pump data	US g.p.m.		Sense of rotation	Clockwise from the drive end
	ft		Outlet width	DN 32
	Flow		Speed	rpm 3600
	Min.	Max.	Frequency	Hz 60 Hz
	US g.p.m.	US g.p.m.		
	35.2	123		
	η Max.	H(Q=0)	Shaft power P2	
	86.9	156	P2(Q=0)	
		124	Max.	5.35
			η Max.	5.25

 Performance data based to: Water, pure [100%]; 68°F; 62.3lb/ft³; 1.08E-5ft²/s

UNI EN ISO 9906:2012 - Grade 3B



Project

Project ID

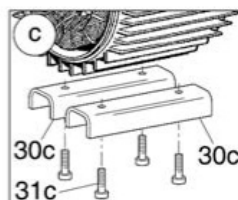
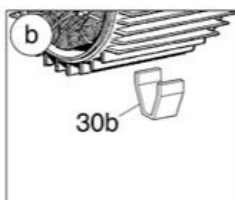
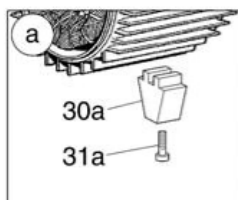
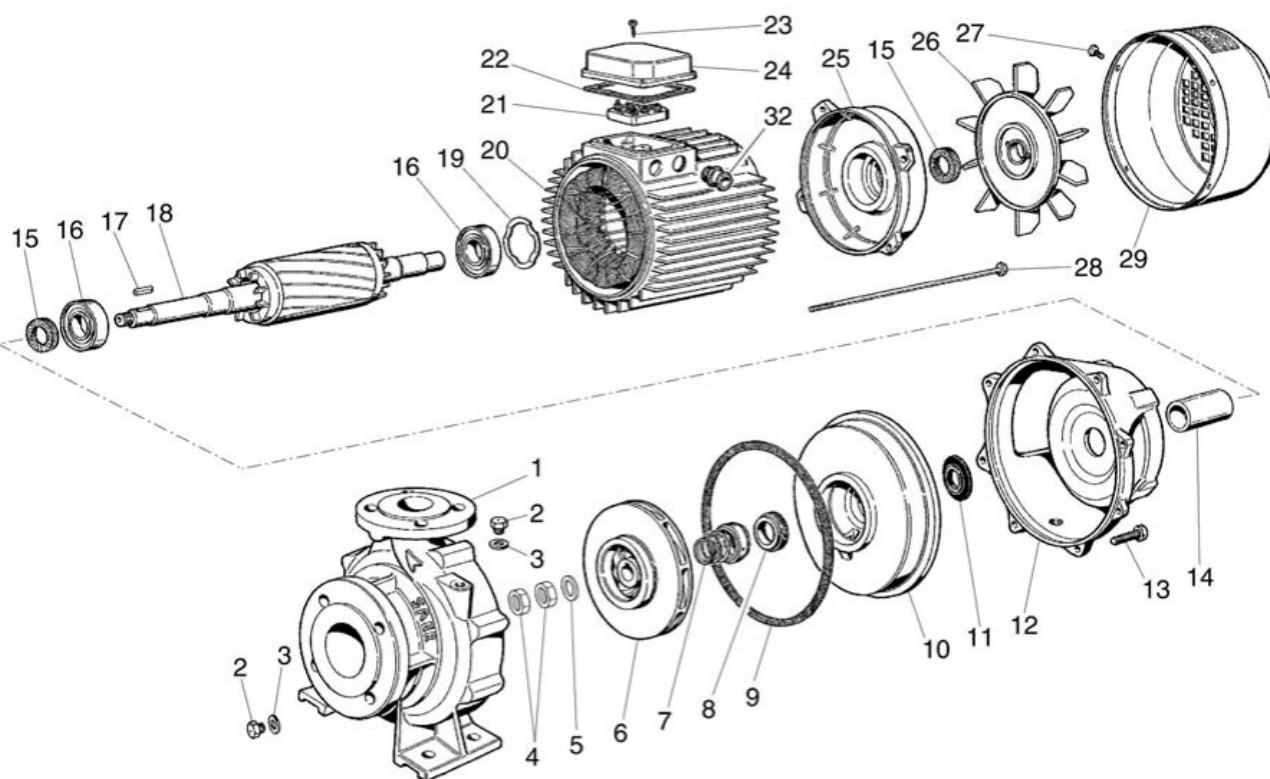
Created by

Created on

Last update

2022-08-01

Company name
Respons. Department
Person in charge
Phone number
Fax no
E-mail address



Project

Project ID

Created by

Created on
2022-08-01

Last update