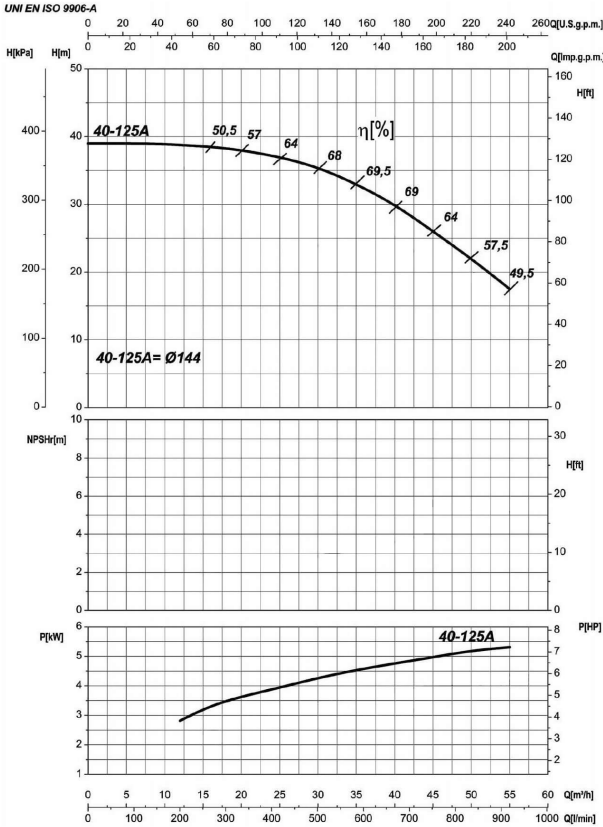


Company name  
 Respons. Department  
 Person in charge  
 Phone number  
 Fax no  
 E-mail address

Receiver	From



### Operating data specification

Nominal flow	US g.p.m. 0
Nominal head	ft 0
Static head	ft 0
NPSH - v value of plant	ft 0
Inlet pressure	psi 1.42
Fluid	Water, pure
Operating temperature t A	°F 68
Density at t A	lb/ft³ 62.32
Kin. viscosity at t A	ft²/s 1.082E-5

Pump		6IR40-125A	
Pump name	6IR40-125A		
Size	65/40/125		
Design			
Speed rpm	3600	No of stages	1
Impeller type			
Flow	Nominal	US g.p.m.	
	Max-	US g.p.m. 242	
	Min-	US g.p.m. 52.8	
Head	Nominal	ft	
	Max-	ft 127	
	Min-	ft 58	
Head H(Q=0)	ft 128		
NPSH 3%	ft		
Max. working pressure	psi 55.5		
Shaft power	hp		
Efficiency	%		
Max absorbed power	hp 7.0971		

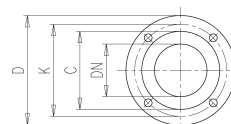
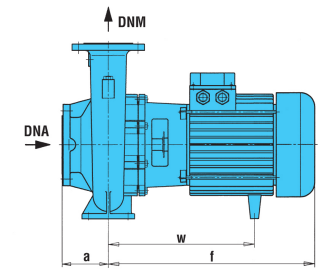
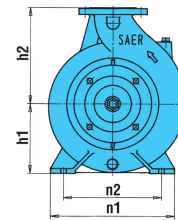
### Materials Pump

Shaft	Stainless steel AISI 431 (1.4057)		
Impeller	Cast iron EN-GJL-250		
Pump body	Cast iron EN-GJL-250		
Seal disc	Cast iron EN-GJL-250		
Gasket	Natural fiber		
Mechanical seal	BVEG (Grafite/Ossido Allumina/EPDM)		

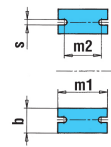
<b>Motor</b>	Frame size	112 M		
Manufacturer / Type	SAER	MEC112M-2P-5.5		
Rated power	hp	7.3756	Efficiency 4/4	86 %
Electric current	A	22 A	Speed rpm	3600
Electric voltage	V	230V	3~	Hz 60
Starting mode	Unknown			
Degree of protection	IP 55	Insulation class	F	

### Dimensions in inch

- a 3<sup>1</sup>/<sub>8</sub>
- b 1<sup>5</sup>/<sub>16</sub>
- DNA 2<sup>9</sup>/<sub>16</sub>
- DNM 1<sup>9</sup>/<sub>16</sub>
- f 16<sup>11</sup>/<sub>16</sub>
- h1 4<sup>7</sup>/<sub>16</sub>
- h2 5<sup>1</sup>/<sub>2</sub>
- m1 3<sup>15</sup>/<sub>16</sub>
- m2 2<sup>3</sup>/<sub>4</sub>
- n1 8<sup>1</sup>/<sub>4</sub>
- n2 6<sup>5</sup>/<sub>16</sub>
- s 9<sup>1</sup>/<sub>16</sub>
- w 12<sup>1</sup>/<sub>4</sub>



- C 3<sup>3</sup>/<sub>16</sub>
- D 5<sup>7</sup>/<sub>16</sub>
- DN 1<sup>9</sup>/<sub>16</sub>
- K 4<sup>5</sup>/<sub>16</sub>
- n° 3<sup>1</sup>/<sub>16</sub>
- øN 3<sup>1</sup>/<sub>4</sub>
- C 4<sup>13</sup>/<sub>16</sub>
- D 7<sup>5</sup>/<sub>16</sub>
- DN 2<sup>9</sup>/<sub>16</sub>
- K 5<sup>11</sup>/<sub>16</sub>
- n° 3<sup>1</sup>/<sub>16</sub>
- øN 3<sup>1</sup>/<sub>4</sub>

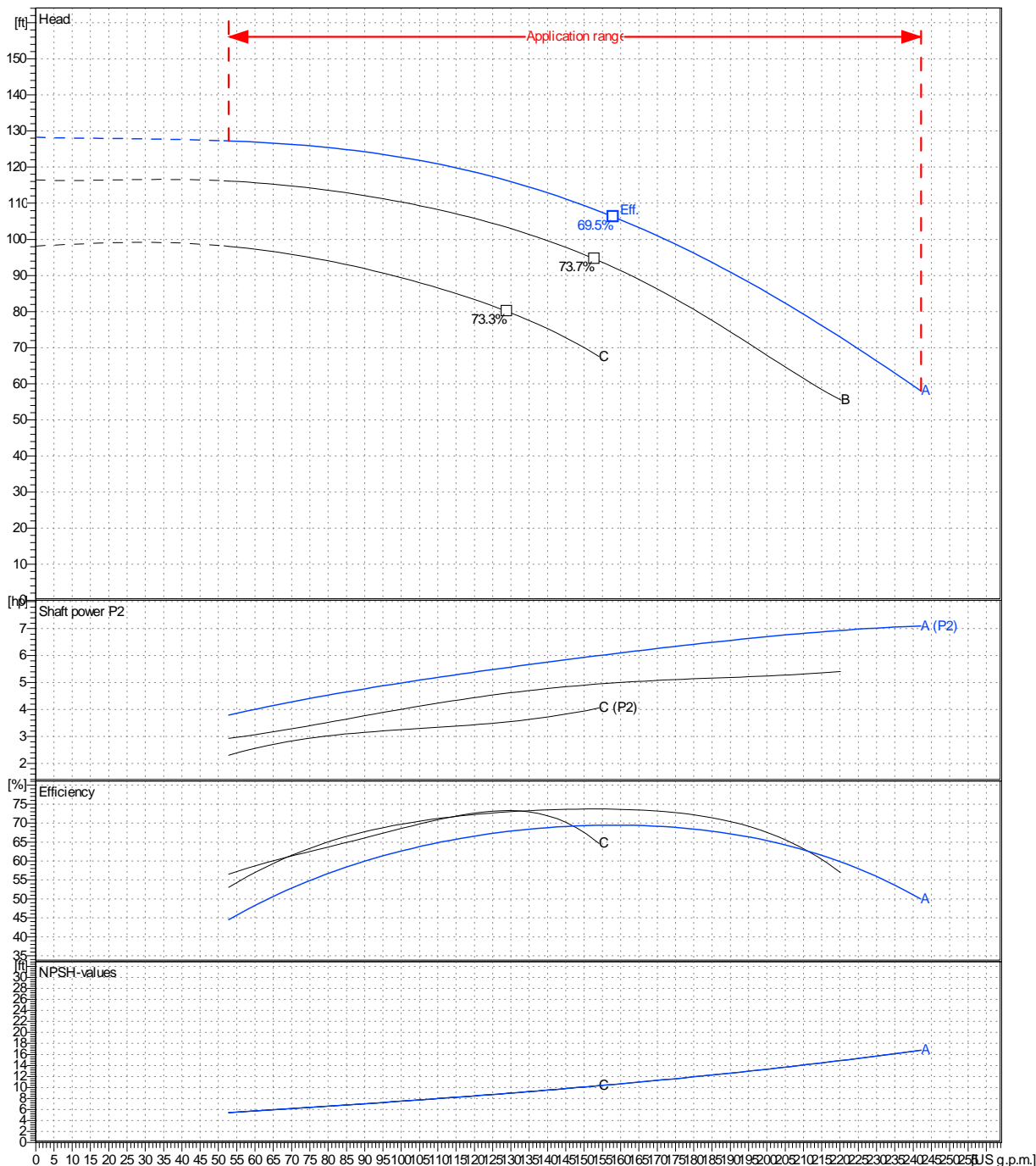


Project	Project ID	Created by	Created on	Last update
			8/10/2022	

<b>Receiver</b>	<b>From</b>
Company name	
Respons. Department	
Person in charge	
Phone number	
Fax no	
E-mail address	

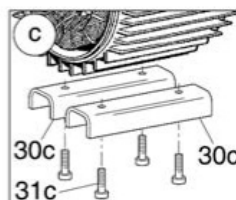
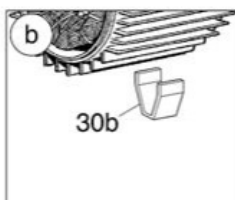
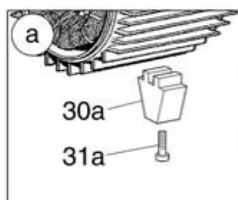
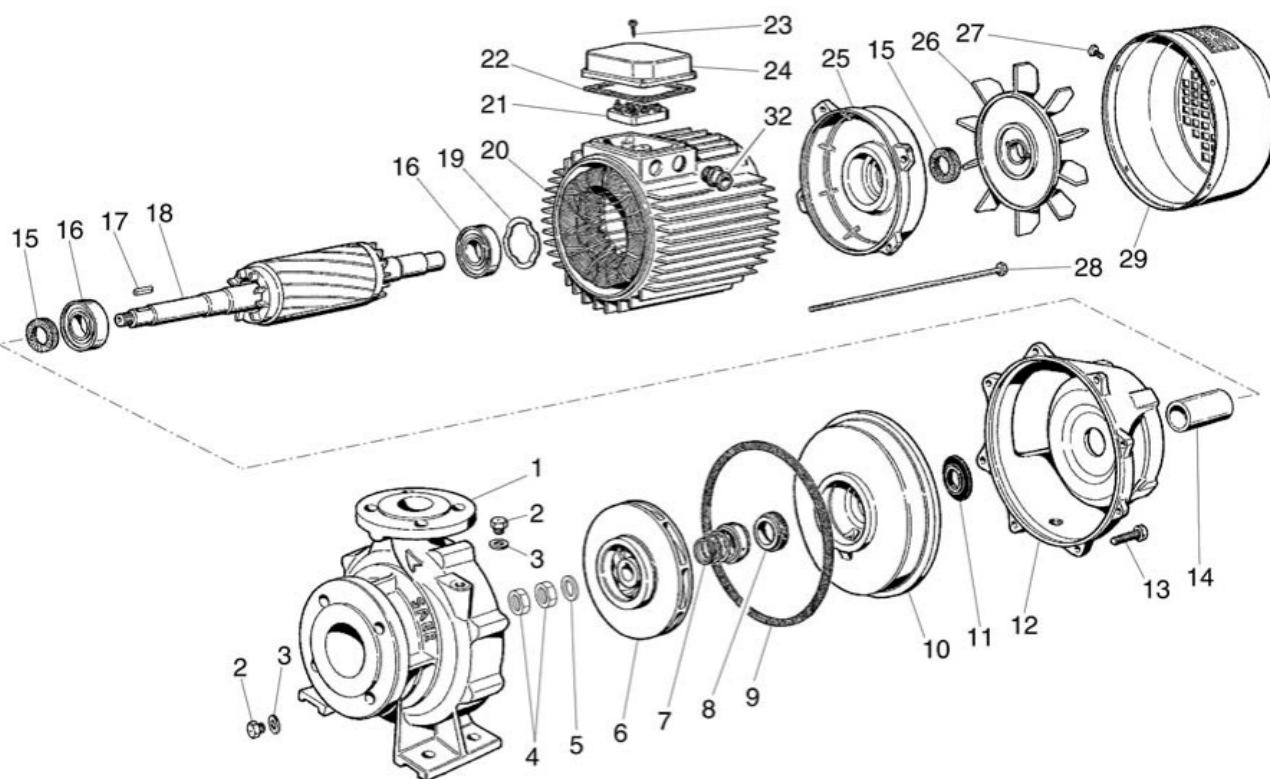
Operating area	Flow	Head	Impeller type
Operating data specification	0 US g.p.m.	0 ft	Impeller construction
Pump data	US g.p.m.	ft	Sense of rotation
			Clockwise from the drive end
			Outlet width
			DN 40
			Speed
			rpm 3600
			Frequency
			Hz 60 Hz

Performance data based to: Water, pure [100%] ; 68°F; 62.3lb/ft³; 1.08E-5ft²/s UNI EN ISO 9906:2012 - Grade 3B



Project	Project ID	Created by	Created on	Last update
			<b>8/10/2022</b>	

Company name  
Respons. Department  
Person in charge  
Phone number  
Fax no  
E-mail address



Project

Project ID

Created by

Created on  
8/10/2022

Last update