

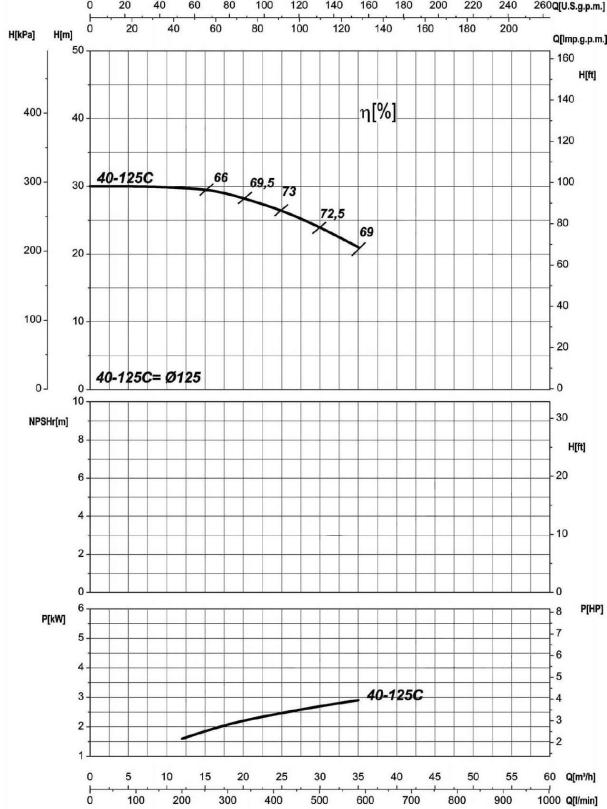
Receiver

From

 Company name  
 Respons. Department  
 Person in charge  
 Phone number  
 Fax no  
 E-mail address

|  |  |
|--|--|
|  |  |
|  |  |
|  |  |
|  |  |
|  |  |
|  |  |

UNI EN ISO 9906-A



### Operating data specification

|                           |                    |             |
|---------------------------|--------------------|-------------|
| Nominal flow              | US g.p.m.          | 0           |
| Nominal head              | ft                 | 0           |
| Static head               | ft                 | 0           |
| NPSH - v value of plant   | ft                 | 0           |
| Inlet pressure            | psi                | 1.42        |
| Fluid                     |                    | Water, pure |
| Operating temperature t A | °F                 | 68          |
| Density at t A            | lb/ft <sup>3</sup> | 62.32       |
| Kin. viscosity at t A     | ft <sup>2</sup> /s | 1.082E-5    |

### Pump

|                       |            |              |      |
|-----------------------|------------|--------------|------|
| Pump name             | 6IR40-125C |              |      |
| Size                  | 65/40/125  |              |      |
| Design                |            |              |      |
| Speed rpm             | 3600       | No of stages | 1    |
| Impeller type         |            |              |      |
| Flow                  | Nominal    | US g.p.m.    |      |
|                       | Max-       | US g.p.m.    | 154  |
|                       | Min-       | US g.p.m.    | 52.8 |
| Head                  | Nominal    | ft           |      |
|                       | Max-       | ft           | 98.1 |
|                       | Min-       | ft           | 67.6 |
| Head H(Q=0)           | ft         | 98.1         |      |
| NPSH 3%               | ft         |              |      |
| Max. working pressure | psi        | 42.5         |      |
| Shaft power           | hp         |              |      |
| Efficiency            | %          |              |      |
| Max absorbed power    | hp         | 4.0553       |      |

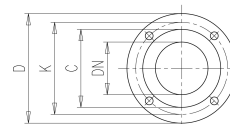
### Materials Pump

|                 |                                     |  |  |
|-----------------|-------------------------------------|--|--|
| Shaft           | Stainless steel AISI 431 (1.4057)   |  |  |
| Impeller        | Cast iron EN-GJL-250                |  |  |
| Pump body       | Cast iron EN-GJL-250                |  |  |
| Seal disc       | Cast iron EN-GJL-250                |  |  |
| Gasket          | Natural fiber                       |  |  |
| Mechanical seal | BVEG (Grafito/Ossido Allumina/EPDM) |  |  |
|                 |                                     |  |  |
|                 |                                     |  |  |
|                 |                                     |  |  |
|                 |                                     |  |  |
|                 |                                     |  |  |
|                 |                                     |  |  |
|                 |                                     |  |  |
|                 |                                     |  |  |
|                 |                                     |  |  |

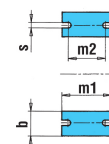
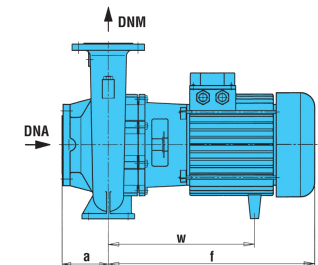
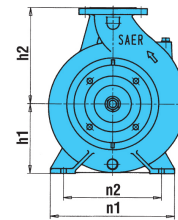
|                      |            |                  |                |       |
|----------------------|------------|------------------|----------------|-------|
| Motor                | Frame size | 90 L             |                |       |
| Manufacturer / Type  | SAER       | MEC90L-2P-3      |                |       |
| Rated power          | hp         | 4.0231           | Efficiency 4/4 | 83 %  |
| Electric current     | A          | 10 A             | Speed rpm      | 3600  |
| Electric voltage     | V          | 230V             | 3~             | Hz 60 |
| Starting mode        | Unknown    |                  |                |       |
| Degree of protection | IP 55      | Insulation class | F              |       |

### Dimensions in inch

- a 3<sup>1</sup>/<sub>8</sub>
- b 1<sup>5</sup>/<sub>16</sub>
- DNA 2<sup>9</sup>/<sub>16</sub>
- DNM 1<sup>9</sup>/<sub>16</sub>
- f 14<sup>5</sup>/<sub>16</sub>
- h1 4<sup>7</sup>/<sub>16</sub>
- h2 5<sup>1</sup>/<sub>2</sub>
- m1 3<sup>15</sup>/<sub>16</sub>
- m2 2<sup>3</sup>/<sub>4</sub>
- n1 8<sup>1</sup>/<sub>4</sub>
- n2 6<sup>5</sup>/<sub>16</sub>
- s 9<sup>1</sup>/<sub>16</sub>
- w 10<sup>1</sup>/<sub>2</sub>



- C 3<sup>7</sup>/<sub>16</sub>
- D 5<sup>7</sup>/<sub>8</sub>
- DN 1<sup>9</sup>/<sub>16</sub>
- K 4<sup>5</sup>/<sub>16</sub>
- n° 3<sup>7</sup>/<sub>16</sub>
- Øn 3<sup>1</sup>/<sub>4</sub>
- C 4<sup>13</sup>/<sub>16</sub>
- D 7<sup>5</sup>/<sub>16</sub>
- DN 2<sup>9</sup>/<sub>16</sub>
- K 5<sup>1</sup>/<sub>16</sub>
- n° 3<sup>7</sup>/<sub>16</sub>
- Øn 3<sup>1</sup>/<sub>4</sub>



Remarks:

|         |            |            |            |             |
|---------|------------|------------|------------|-------------|
| Project | Project ID | Created by | Created on | Last update |
|         |            |            | 2022-08-01 |             |

Receiver

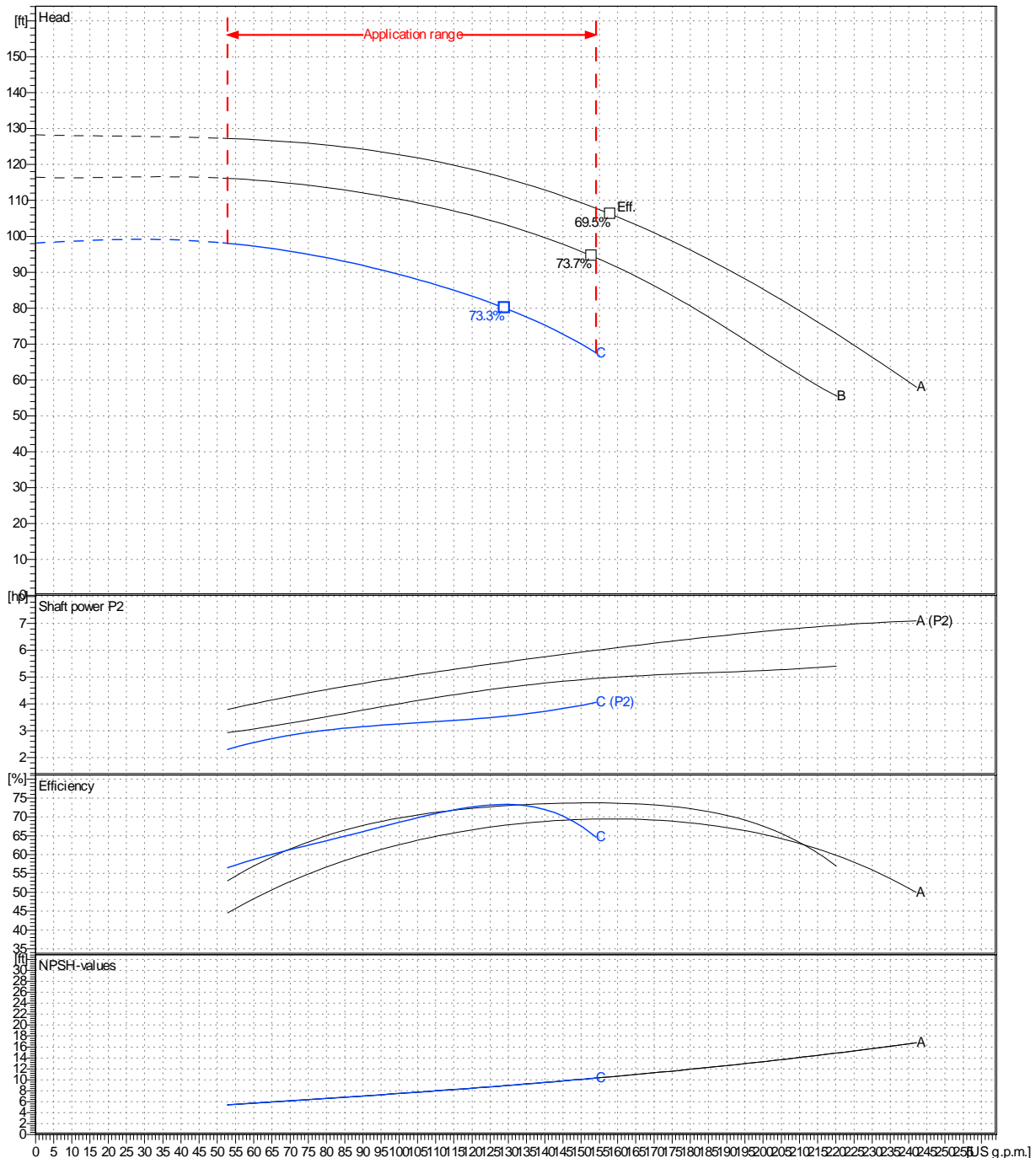
From

 Company name  
 Respons. Department  
 Person in charge  
 Phone number  
 Fax no  
 E-mail address

|                              |             |           |                       |                              |
|------------------------------|-------------|-----------|-----------------------|------------------------------|
| Operating area               | Flow        | Head      | Impeller type         |                              |
| Operating data specification | 0 US g.p.m. | 0 ft      | Impeller construction | Closed                       |
| Pump data                    | US g.p.m.   | ft        | Sense of rotation     | Clockwise from the drive end |
|                              |             |           | Outlet width          | DN 40                        |
|                              | Flow        |           | Shaft power P2        | Speed                        |
|                              | Min.        | Max.      | P2(Q=0)               | rpm                          |
|                              | Max. $\eta$ | H(Q=0)    | Max. $\eta$           | Hz                           |
|                              | US g.p.m.   | US g.p.m. | hp                    | 3600                         |
|                              | 154         | 129       | 4.06                  | 60 Hz                        |
|                              | 73.3%       | 98.1      | 3.54                  |                              |
|                              |             | 80        |                       |                              |

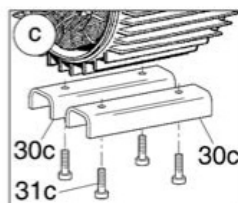
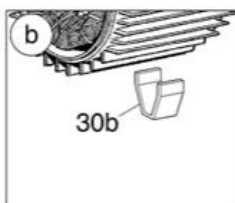
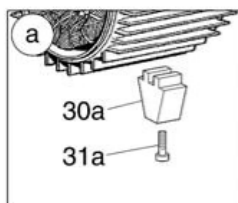
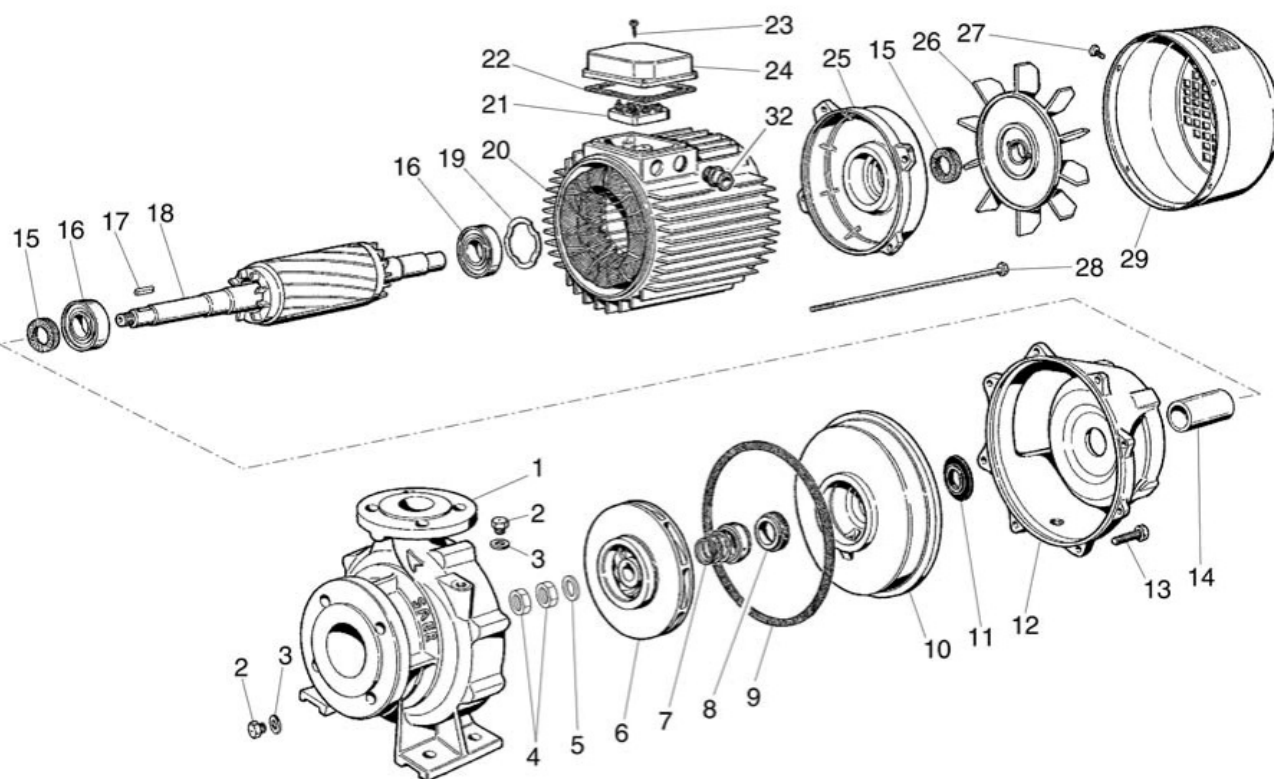
 Performance data based to: Water, pure [100%] ; 68°F; 62.3lb/ft<sup>3</sup>; 1.08E-5ft<sup>2</sup>/s

UNI EN ISO 9906:2012 - Grade 3B



|         |            |            |            |             |
|---------|------------|------------|------------|-------------|
| Project | Project ID | Created by | Created on | Last update |
|         |            |            | 2022-08-01 |             |

Company name  
Respons. Department  
Person in charge  
Phone number  
Fax no  
E-mail address



Project

Project ID

Created by

Created on  
**2022-08-01**

Last update