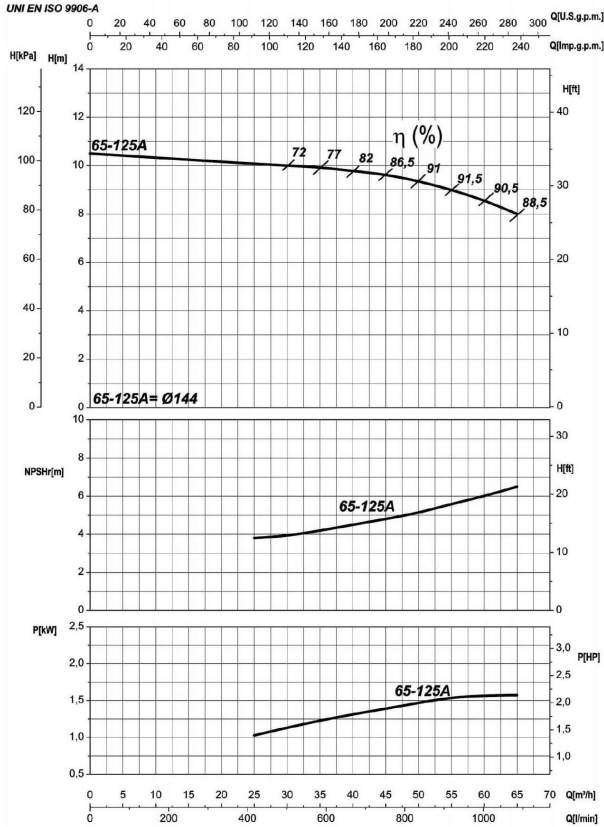


Receiver

From

 Company name
 Respons. Department
 Person in charge
 Phone number
 Fax no
 E-mail address



Operating data specification

Nominal flow	US g.p.m. 0
Nominal head	ft 0
Static head	ft 0
NPSH - v value of plant	ft 0
Inlet pressure	psi 1.42
Fluid	Water, pure
Operating temperature t A	°F 68
Density at t A	lb/ft³ 62.32
Kin. viscosity at t A	ft²/s 1.082E-5

Pump

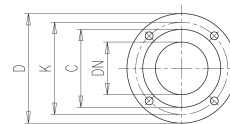
Pump name		6IR4P 65-125A	
Size		80/65/125	
Design			
Speed rpm	1800	No of stages	1
Impeller type			
Flow	Nominal	US g.p.m.	
	Max-	US g.p.m. 286	
	Min-	US g.p.m. 110	
Head	Nominal	ft	
	Max-	ft 33	
	Min-	ft 26.1	
Head H(Q=0)		ft 34.3	
NPSH 3%		ft	
Max. working pressure		psi 14.8	
Shaft power		hp	
Efficiency		%	
Max absorbed power		hp 2.139	

Materials Pump

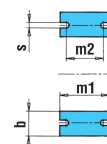
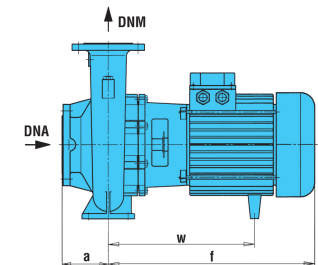
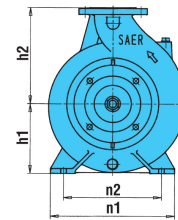
Shaft	Stainless steel AISI 431 (1.4057)
Impeller	Cast iron EN-GJL-250
Pump body	Cast iron EN-GJL-250
Seal disc	Cast iron EN-GJL-250
Gasket	Natural fiber
Mechanical seal	BVEG (Grafite/Ossido Allumina/EPDM)

Dimensions in inch

a	3 ¹⁵ / ₁₆
b	2 ⁹ / ₁₆
DNA	3 ⁷ / ₈
DNM	2 ⁹ / ₁₆
f	14 ⁵ / ₈
h1	6 ⁵ / ₁₆
h2	7 ¹ / ₁₆
m1	4 ¹⁵ / ₁₆
m2	3 ³ / ₄
n1	11
n2	8 ³ / ₈
s	9 ¹ / ₁₆
w	10 ³ / ₄



C	4 ⁹ / ₁₆	C	5 ⁷ / ₁₆
D	7 ⁵ / ₁₆	D	7 ⁷ / ₈
DN	2 ⁹ / ₁₆	DN	3 ⁷ / ₈
K	5 ¹¹ / ₁₆	K	6 ⁵ / ₁₆
n°	3 ¹ / ₁₆	n°	3 ¹ / ₁₆
ø n	3 ¹ / ₄	ø n	3 ¹ / ₄



Motor		Frame size	90 L		
Manufacturer / Type		SAER	MEC90L-4P-1.5		
Rated power	hp	2.0115	Efficiency 4/4	81 %	
Electric current	A	7 A	Speed	rpm	1800
Electric voltage	V	230V	3~	Hz	60
Starting mode		Unknown			
Degree of protection		IP 55	Insulation class	F	

Remarks:

Project	Project ID	Created by	Created on	Last update
			2022-08-01	

Receiver

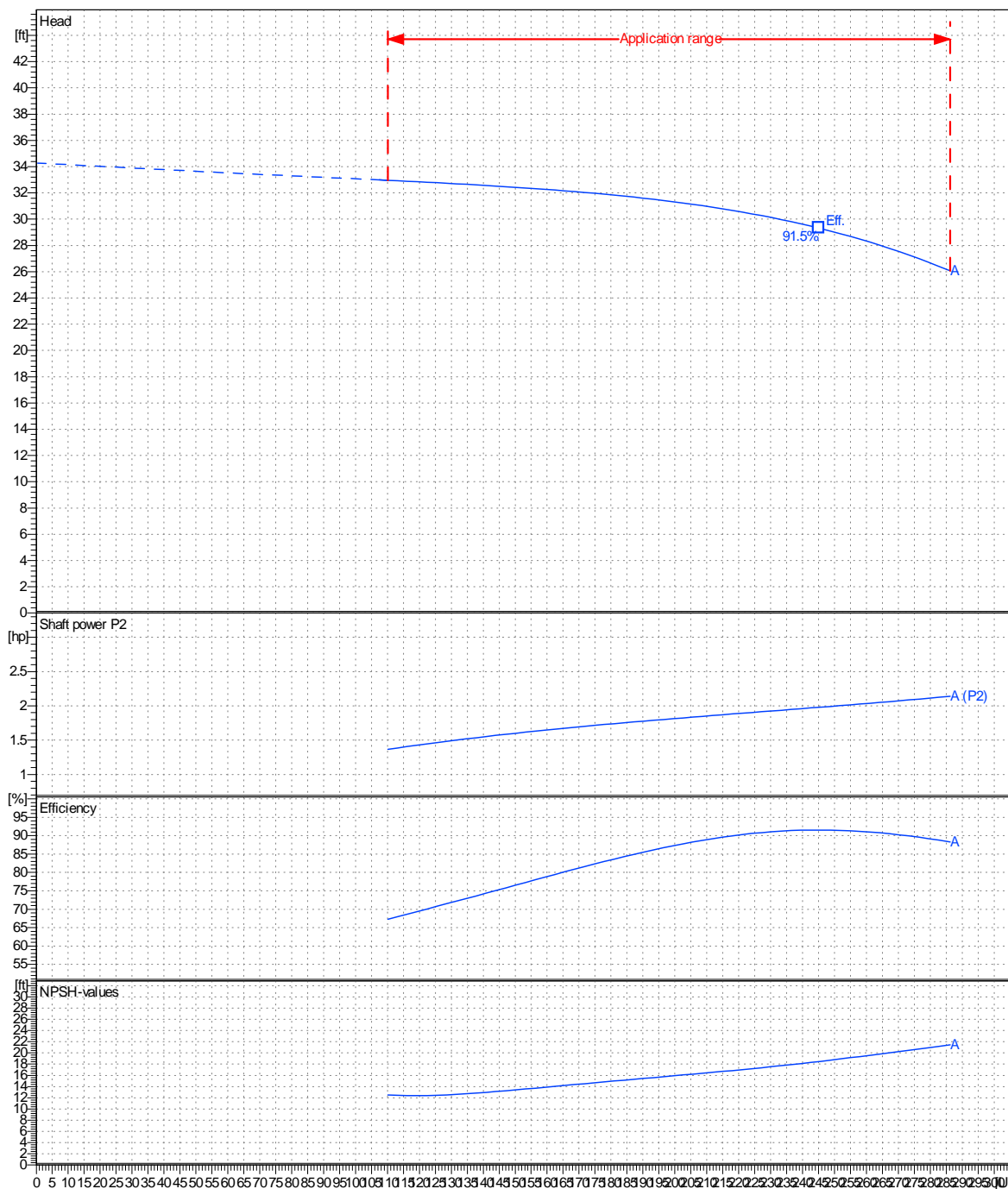
From

 Company name
 Respons. Department
 Person in charge
 Phone number
 Fax no
 E-mail address

Operating area	Flow	Head	Impeller type
Operating data specification	0 US g.p.m.	0 ft	Impeller construction Closed
Pump data	US g.p.m.	ft	Sense of rotation Clockwise from the drive end
			Outlet width DN 65
	Flow	Head	Shaft power P2
	Min. Max. η Max.	H(Q=0) η Max.	P2(Q=0) Max. η Max.
	US g.p.m. US g.p.m. US g.p.m.	ft ft	hp hp hp
	110 286 245	34.3 29.3	2.14 1.98
			Speed rpm 1800
			Frequency Hz 60 Hz

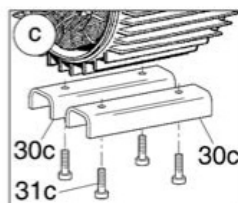
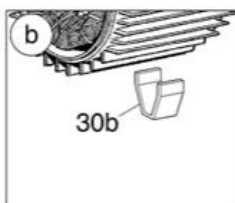
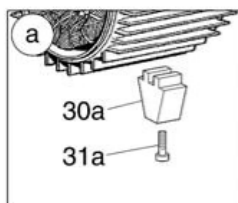
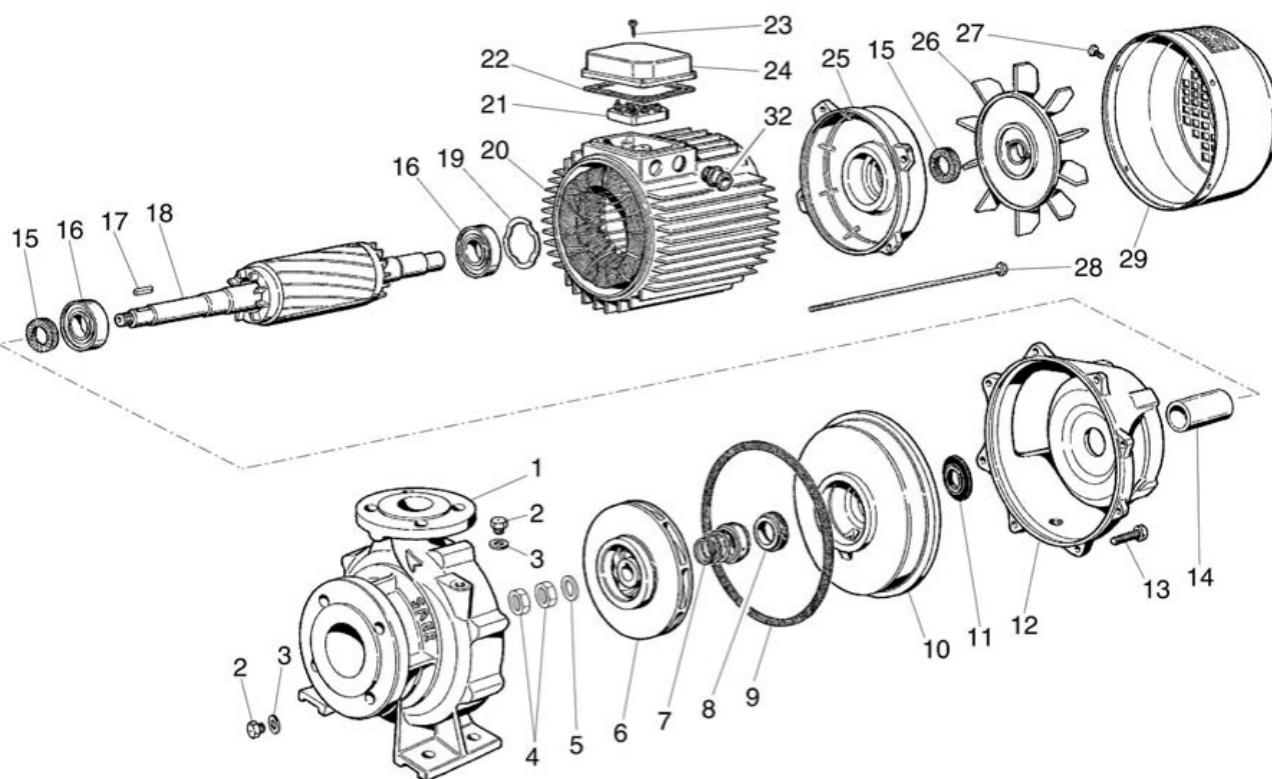
 Performance data based to: Water, pure [100%]; 68°F; 62.3lb/ft³; 1.08E-5ft²/s

UNI EN ISO 9906:2012 - Grade 3B



Project	Project ID	Created by	Created on	Last update
			2022-08-01	

Company name
Respons. Department
Person in charge
Phone number
Fax no
E-mail address



Project

Project ID

Created by

Created on
2022-08-01

Last update