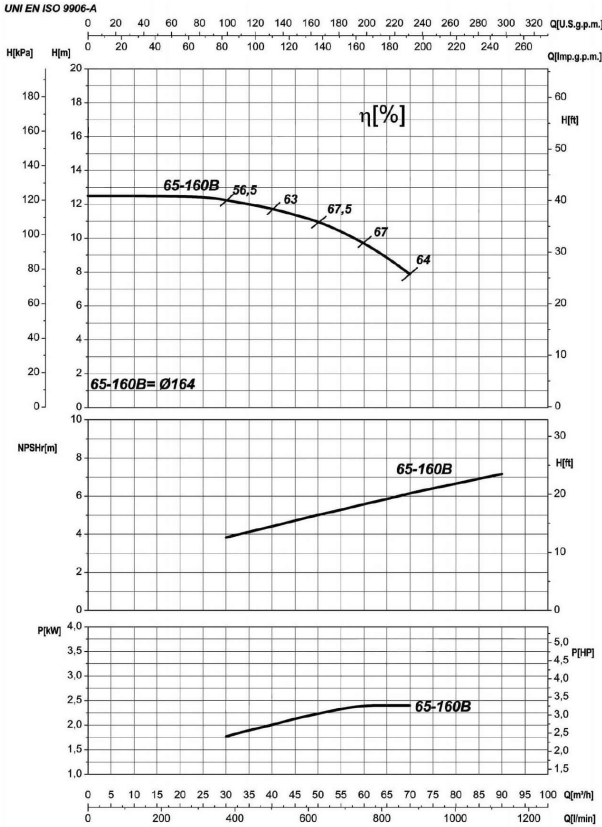


Company name  
 Respons. Department  
 Person in charge  
 Phone number  
 Fax no  
 E-mail address

| Receiver | From |
|----------|------|
|          |      |
|          |      |
|          |      |
|          |      |
|          |      |
|          |      |



### Operating data specification

|                           |                |
|---------------------------|----------------|
| Nominal flow              | US g.p.m. 0    |
| Nominal head              | ft 0           |
| Static head               | ft 0           |
| NPSH - v value of plant   | ft 0           |
| Inlet pressure            | psi 1.42       |
| Fluid                     | Water, pure    |
| Operating temperature t A | °F 68          |
| Density at t A            | lb/ft³ 62.32   |
| Kin. viscosity at t A     | ft²/s 1.082E-5 |

| Pump                  |               | 6IR4P 65-160B |   |
|-----------------------|---------------|---------------|---|
| Pump name             | 6IR4P 65-160B |               |   |
| Size                  | 80/65/160     |               |   |
| Design                |               |               |   |
| Speed rpm             | 1800          | No of stages  | 1 |
| Impeller type         |               |               |   |
| Flow                  | Nominal       | US g.p.m.     |   |
|                       | Max-          | US g.p.m. 308 |   |
|                       | Min-          | US g.p.m. 132 |   |
| Head                  | Nominal       | ft            |   |
|                       | Max-          | ft 40         |   |
|                       | Min-          | ft 25.9       |   |
| Head H(Q=0)           | ft 40.9       |               |   |
| NPSH 3%               | ft            |               |   |
| Max. working pressure | psi 17.7      |               |   |
| Shaft power           | hp            |               |   |
| Efficiency            | %             |               |   |
| Max absorbed power    | hp 3.2274     |               |   |

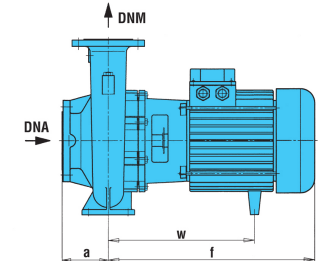
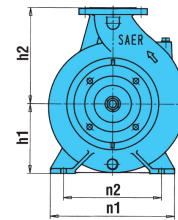
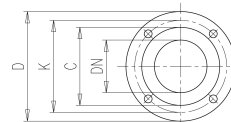
### Materials Pump

|                 |                                     |  |  |
|-----------------|-------------------------------------|--|--|
| Shaft           | Stainless steel AISI 431 (1.4057)   |  |  |
| Impeller        | Cast iron EN-GJL-250                |  |  |
| Pump body       | Cast iron EN-GJL-250                |  |  |
| Seal disc       | Cast iron EN-GJL-250                |  |  |
| Gasket          | Natural fiber                       |  |  |
| Mechanical seal | BVEG (Grafito/Ossido Allumina/EPDM) |  |  |
|                 |                                     |  |  |
|                 |                                     |  |  |
|                 |                                     |  |  |
|                 |                                     |  |  |
|                 |                                     |  |  |
|                 |                                     |  |  |
|                 |                                     |  |  |
|                 |                                     |  |  |
|                 |                                     |  |  |

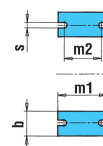
|                      |            |                  |                |       |
|----------------------|------------|------------------|----------------|-------|
| <b>Motor</b>         | Frame size | 100 L            |                |       |
| Manufacturer / Type  | SAER       | MEC100L-4P-2.2   |                |       |
| Rated power          | hp         | 2.9502           | Efficiency 4/4 | 81 %  |
| Electric current     | A          | 9.6 A            | Speed rpm      | 1800  |
| Electric voltage     | V          | 230V             | 3~             | Hz 60 |
| Starting mode        | Unknown    |                  |                |       |
| Degree of protection | IP 55      | Insulation class | F              |       |

### Dimensions in inch

- a 3<sup>15</sup>/<sub>16</sub>
- b 2<sup>9</sup>/<sub>16</sub>
- DNA 3<sup>7</sup>/<sub>8</sub>
- DNM 2<sup>9</sup>/<sub>16</sub>
- f 15<sup>7</sup>/<sub>16</sub>
- h1 6<sup>5</sup>/<sub>16</sub>
- h2 7<sup>7</sup>/<sub>8</sub>
- m1 4<sup>15</sup>/<sub>16</sub>
- m2 3<sup>3</sup>/<sub>4</sub>
- n1 11
- n2 8<sup>3</sup>/<sub>8</sub>
- s 9<sup>9</sup>/<sub>16</sub>
- w 10<sup>11</sup>/<sub>16</sub>



- |                                   |                                   |
|-----------------------------------|-----------------------------------|
| C 4 <sup>9</sup> / <sub>16</sub>  | C 5 <sup>7</sup> / <sub>16</sub>  |
| D 7 <sup>5</sup> / <sub>16</sub>  | D 7 <sup>7</sup> / <sub>8</sub>   |
| DN 2 <sup>9</sup> / <sub>16</sub> | DN 3 <sup>7</sup> / <sub>8</sub>  |
| K 5 <sup>11</sup> / <sub>16</sub> | K 6 <sup>9</sup> / <sub>16</sub>  |
| n° 3 <sup>7</sup> / <sub>16</sub> | n° 3 <sup>7</sup> / <sub>16</sub> |
| Øn 3 <sup>3</sup> / <sub>4</sub>  | Øn 3 <sup>3</sup> / <sub>4</sub>  |



|          |            |            |            |             |
|----------|------------|------------|------------|-------------|
| Remarks: |            |            |            |             |
| Project  | Project ID | Created by | Created on | Last update |
|          |            |            | 2022-08-01 |             |

Receiver

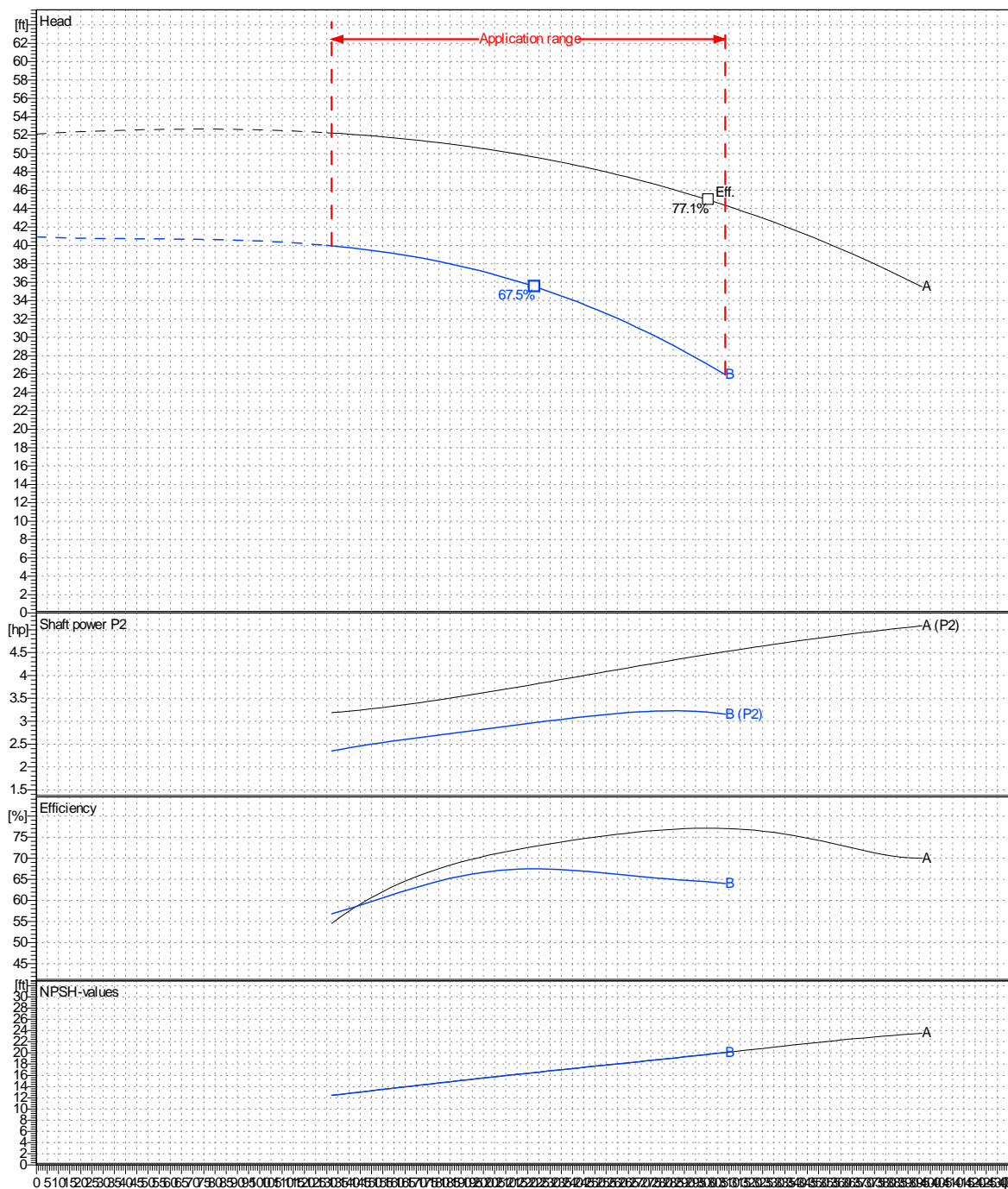
From

 Company name  
 Respons. Department  
 Person in charge  
 Phone number  
 Fax no  
 E-mail address

|                              |                |             |   |
|------------------------------|----------------|-------------|---|
| Operating area               | Flow           | Head        | Impeller type                                     |
| Operating data specification | 0 US g.p.m.    | 0 ft        | Impeller construction<br>Closed                   |
| Pump data                    | US g.p.m.      |             | Sense of rotation<br>Clockwise from the drive end |
|                              | ft             |             | Outlet width<br>DN 65                             |
|                              | Flow           |             | Speed   |
|                              | Min.           | Max.        | rpm   |
|                              | 132            | 308         | 1800  |
|                              | Head           |             | Frequency   |
|                              | H(Q=0)         | $\eta$ Max. | Hz  |
|                              | 40.9           | 35.5        | 60 Hz   |
|                              | Shaft power P2 |             |   |
|                              | P2(Q=0)        | Max.        |   |
|                              | 3.23           | 2.97        |   |

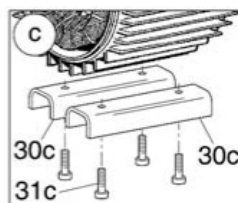
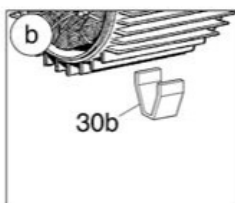
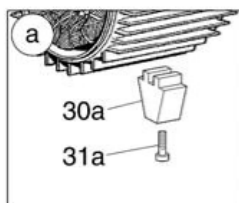
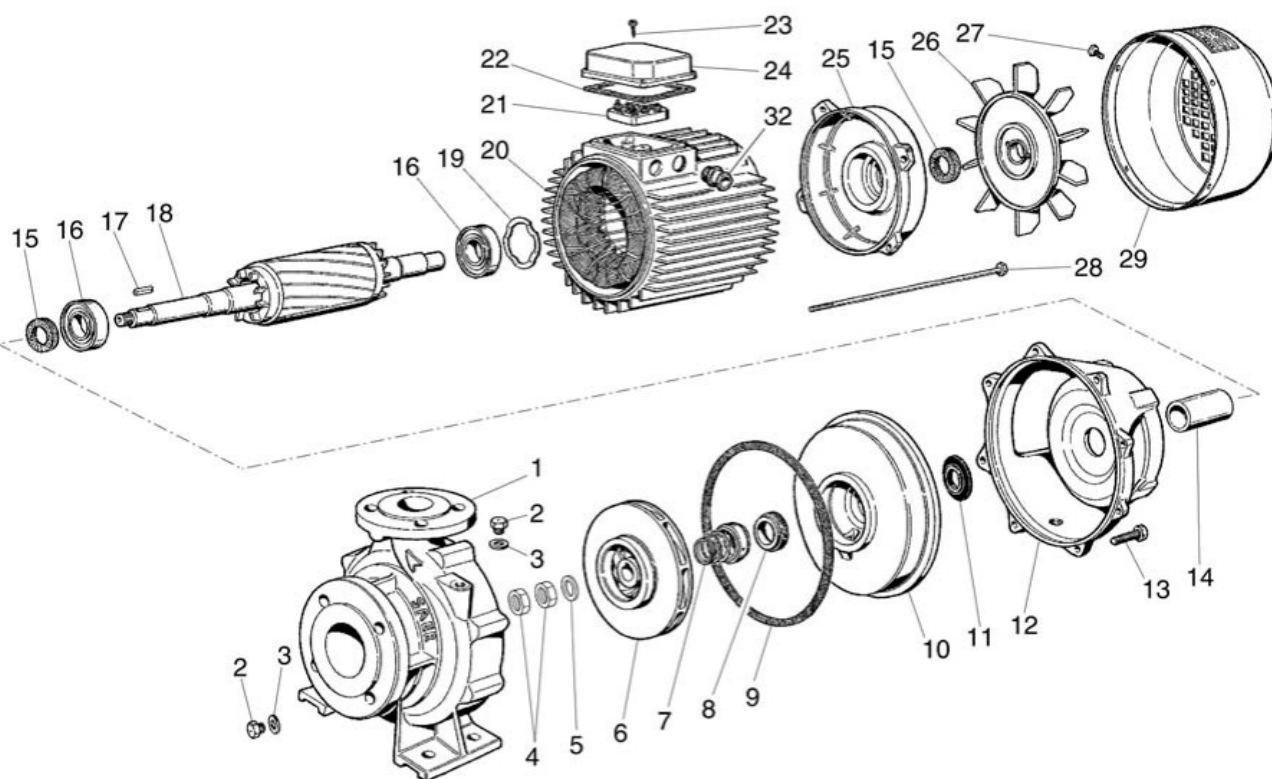
 Performance data based to: Water, pure [100%]; 68°F; 62.3lb/ft<sup>3</sup>; 1.08E-5ft<sup>2</sup>/s

UNI EN ISO 9906:2012 - Grade 3B



|         |            |            |                   |             |
|---------|------------|------------|-------------------|-------------|
| Project | Project ID | Created by | Created on        | Last update |
|         |            |            | <b>2022-08-01</b> |             |

Company name  
Respons. Department  
Person in charge  
Phone number  
Fax no  
E-mail address



Project

Project ID

Created by

Created on  
**2022-08-01**

Last update