



Technical Data **End Suction Pump - EAX50/20**

Revision no.

Page:

1

Receiver

From

Company name
Respons. Department
Person in charge
Phone number
Fax no
E-mail address

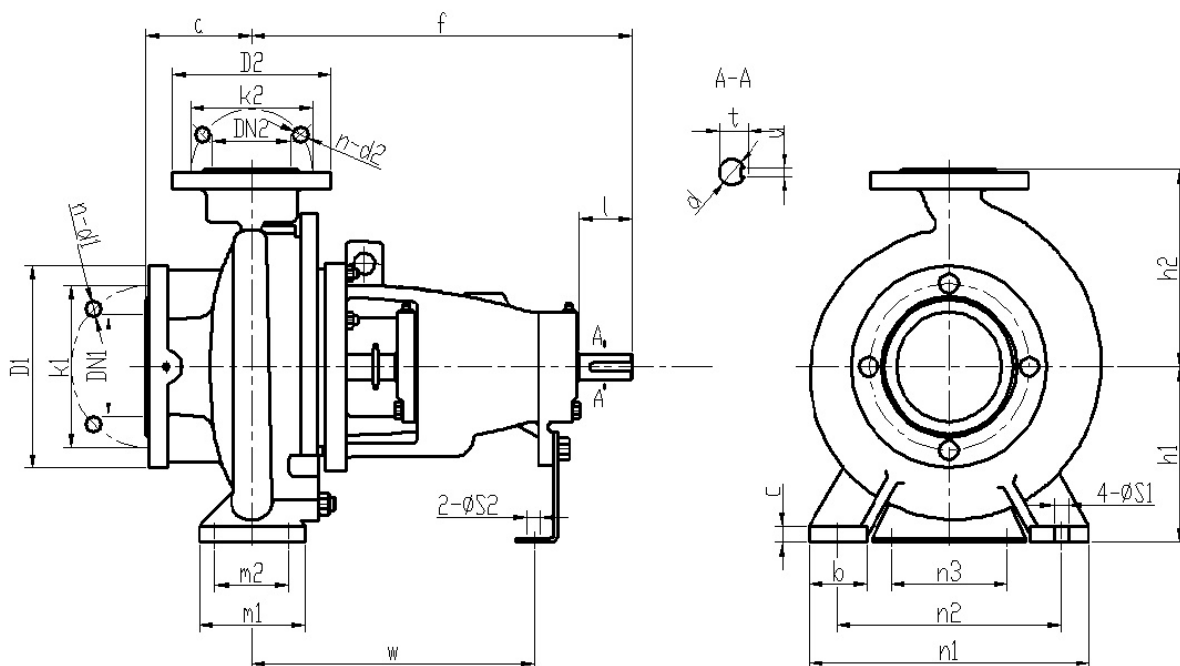


Brand: Gol Pumps
Model: EAX50/20

Weight (lb)

Pump	109
------	-----

Dimensions:



Flange standard: ISO7005.2 DIN2501 PN16 GB/T17241.6 PN1.6

DN1 / DN2	1.25	1.5	2	2.5	3	4	5	6	8	10	12	14	16
D1 / D2	5.5	5.9	6.5	7.3	7.9	8.7	9.8	11.2	13.4	15.9	18.1	20.5	22.8
K1 / K2	3.9	4.3	4.9	5.7	6.3	7.1	8.3	9.4	11.6	14.0	16.1	18.5	20.7
n-d1 / n-d2	4- Ø18	4- Ø18	4- Ø18	4- Ø18	8- Ø18	8- Ø18	8- Ø18	8- Ø22	12- Ø22	12- Ø26	12- Ø26	16- Ø26	16- Ø30

Bearing inner diameter	Inlet and outlet flange	
	DN1	DN2
1	2.5	2

Pump installation size (inch)

a	f	h1	h2	b	c	n3	m1	m2	n1	n2	S1	S2	w	d	l	t	u
4	14.1	6.3	8	2	0.6	4.3	4	2.8	10.5	8.5	0.6	0.6	10.5	1	2	1.1	0.3

Project

Project ID

Created by

Created on

Last update



Performance Curves

End Suction Pump - EAX50/20

Revision no.

Page:

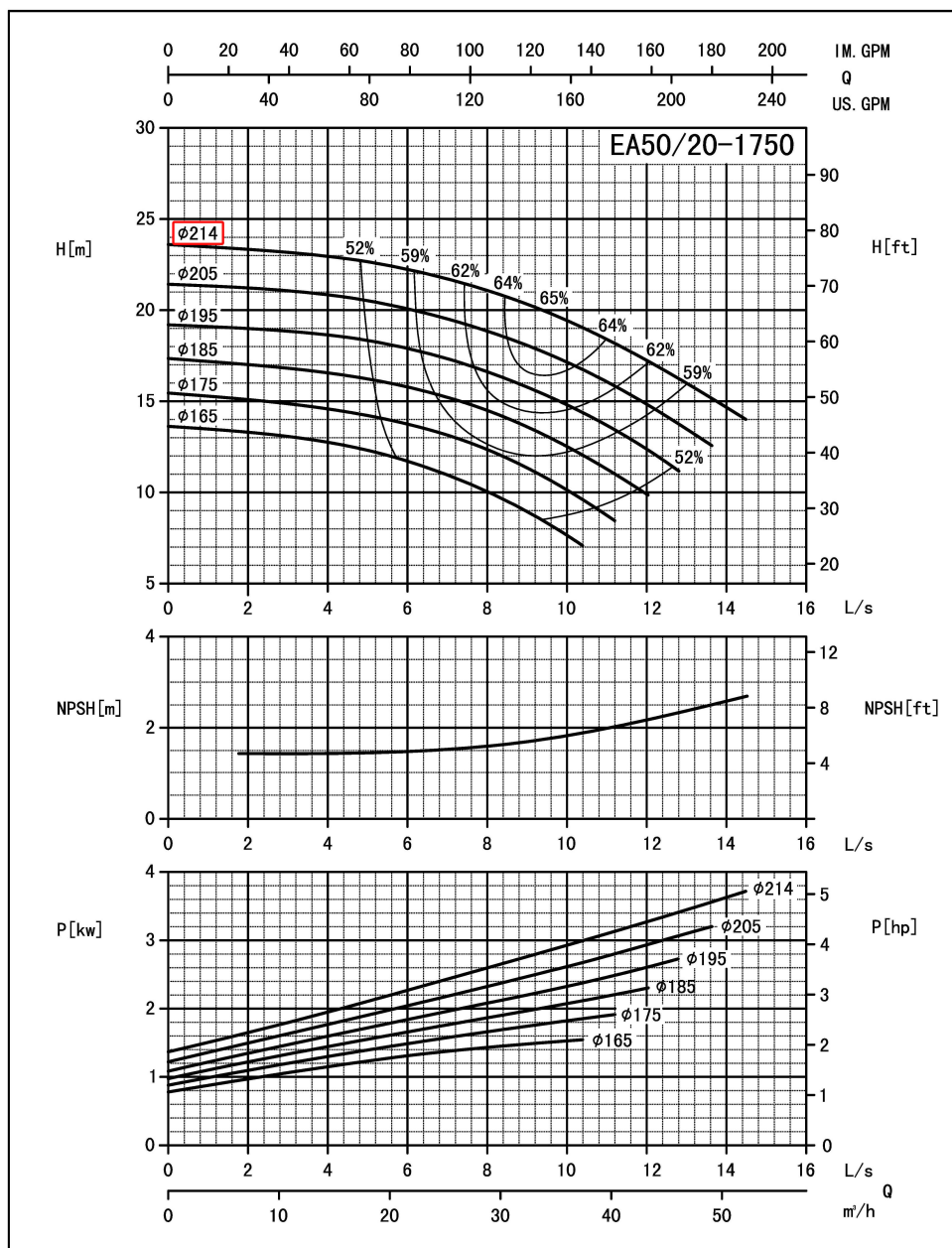
2

Receiver

From

Company name
Respons. Department
Person in charge
Phone number
Fax no
E-mail address

Model	Capacity			Head		Speed	Power			Motor Model	Eff	Impeller Dia.	In	OUT
	m ³ /h	L/s	GPM	m	ft		Shaft	Motor	HP					
EA50/20	18.0	6.03	79.3	22.3	73.1	1750	1.85	2.2	3.0	Y2-112M-4 4KW	59	1.3	214(8.5")	65(2.5")
	30.0	10.05	132.1	19.4	63.5		2.43	3	4.0		65	1.5		
	36.0	12.06	158.5	17.2	56.4		2.72	4	5.4		62	1.8		



Performance to ISO9906 Grade 2 for clean cold water only

EF•A01/1405

Project

Project ID

Created by

Created on

Last update



Performance Curves

End Suction Pump - EAX50/20

Revision no.

Page:

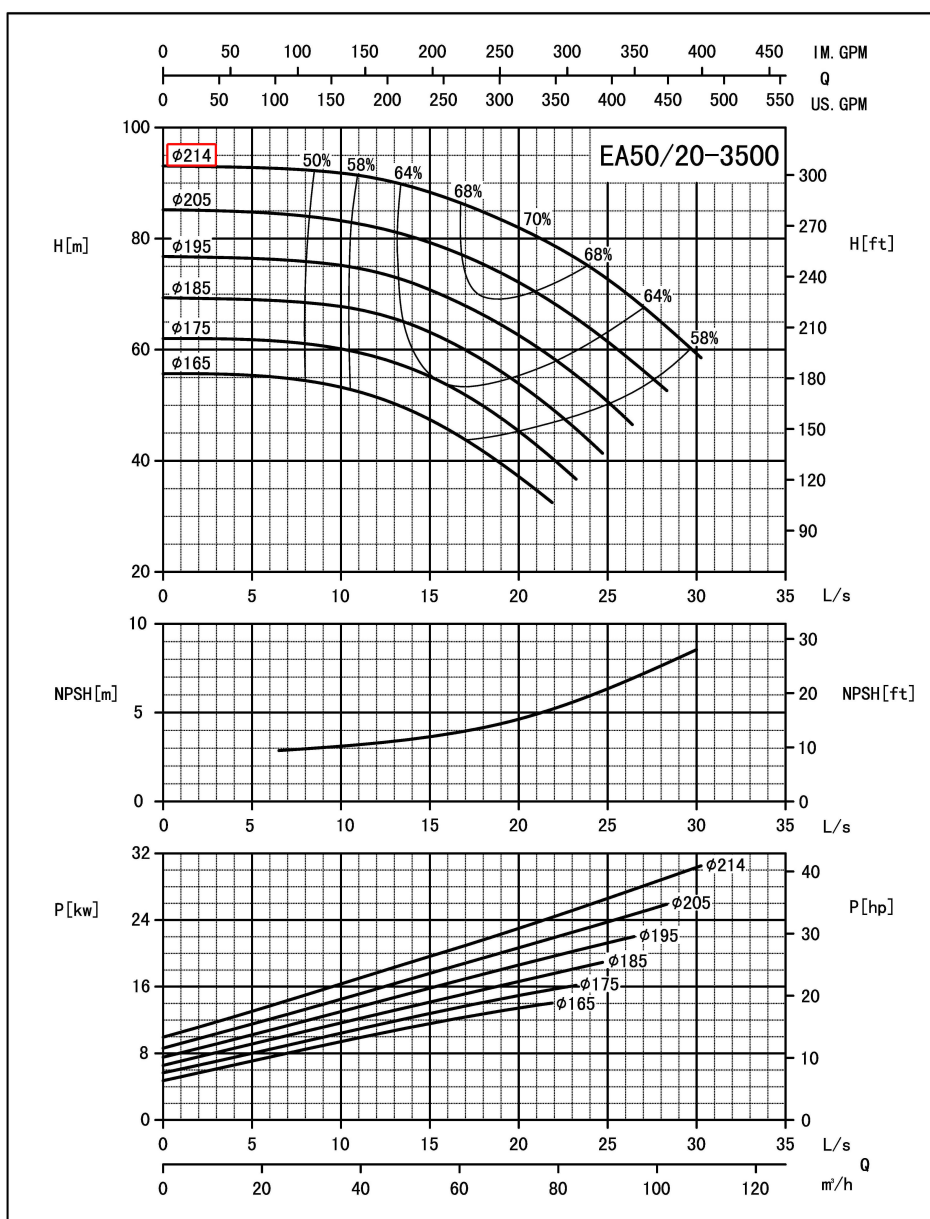
3

Receiver

From

Company name
Respons. Department
Person in charge
Phone number
Fax no
E-mail address

Model	Capacity			Head		Speed	Power			Motor Model	Eff %	Impeller Dia. m	In mm/in	OUT mm/in
	m ³ /h	L/s	GPM	m	ft		Shaft kw	Motor kw	HP					
EA50/20	43.5	12.07	191.5	90.3	296.2	3500	18.42	22	29.5	Y2-200L1-2 30KW	58	2.2	214(8.5")	65(2.5")
	72.4	20.12	318.8	81.6	267.5		22.98	30	40.2		70	3.2		
	86.9	24.14	382.6	74.3	243.7		25.85	30	40.2		68	4		



Performance to ISO9906 Grade 2 for clean cold water only

EF-A01/1405

Project

Project ID

Created by

Created on

Last update